

The **Cube Cam** is a small discreet outdoor digital surveillance camera for monitoring all outdoor activity at close range.

The high sensitivity camera captures high-resolution colour images when motion is detected. The images are stored on a removable memory card for easy viewing on a computer or PDA. The camera can also be configured to capture images on a time-lapse basis.

The camera can store up to **560K images** and will optionally overwrite the oldest images when the memory card is full - for 'set and forget' operation.

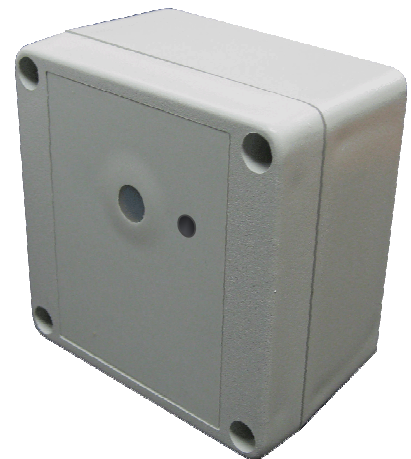
The **Cube Cam** is housed in a rugged weatherproof case for optimum protection and can be spray painted any colour to blend in with the surroundings.

The Camera can operate for up to **5 ½ months** in standby mode. Utilising its patented ultra low power video processing technology, the camera can operate for more than **15 weeks** when capturing **200 photos per day**, every day of the week!

The Camera is ideal for monitoring entrance ways, farm gates, parking garages and graffiti etc.

FEATURES

- High sensitivity image sensor for low light operation
- Standalone operation from 7.5Ah battery with 5 ½ months standby
- Small palm sized camera for unobtrusive surveillance
- Rugged weatherproof case
- Set and forget operation
- High quality glass camera lens
- Customised image-capture sequence & Pre-Trigger image capture
- Motion activated or Time-Lapse camera modes.
- Time and date stamped images with programmable text overlay
- Flexible scheduler for independent arming and disarming
- Time and date stamped event log
- Image encryption for security
- High speed image viewer included with setup software
- Digital signature including camera ID, within each image for legal verification
- Ideal for monitoring parking garages, personnel entrances and farm gates.



SA03-01(ER)	Cube Cam Colour + Accessories	\$1095.00
-------------	-------------------------------	-----------



Car Park

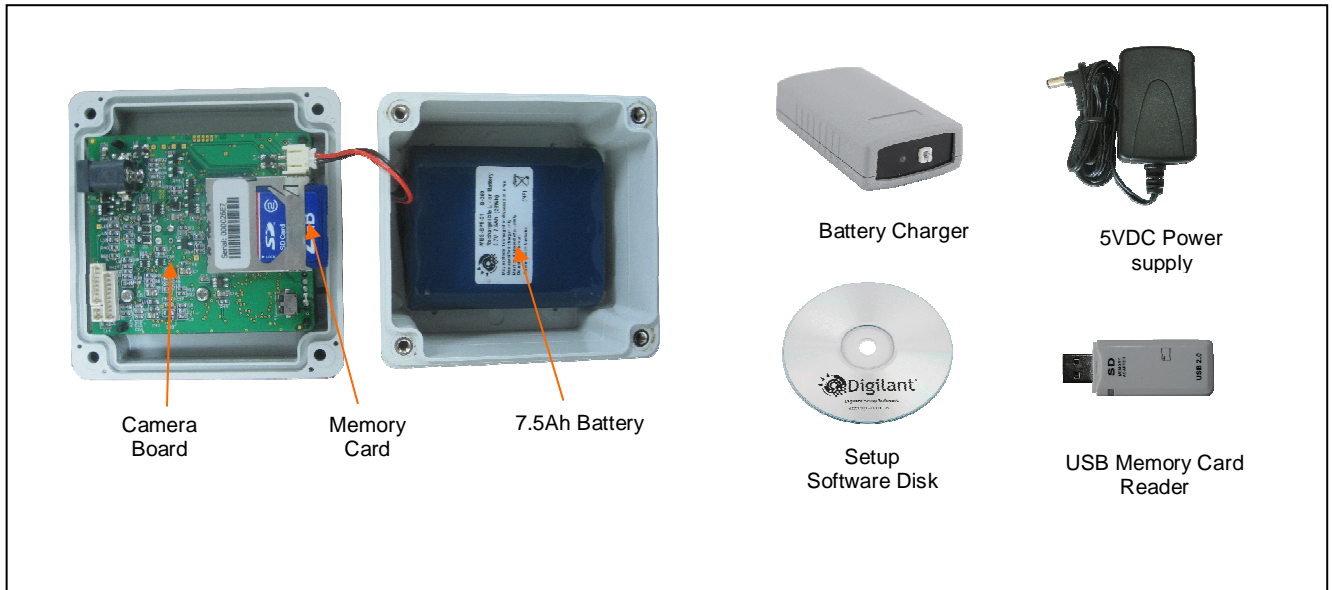


Graffiti



Farm Gate

CAMERA & ACCESSORIES



SPECIFICATIONS

Image Type	Colour, JPEG compressed VGA (640x480pixels), QVGA (320x240)
Camera Lenses	Standard: 3.7mm, 54° (Horizontal) x 39° (Vertical)
Image Sensor Sensitivity	Colour: 3.8 V/Lux-sec
Motion Sensor	Type: PIR (Spot) Range: 0-5 m (16') (Typical), 0-9 m (30') (maximum) Field Of View: 38° horizontal, 22° vertical
Memory Card	SD™ Card (v1.1), FAT16 or FAT 32* file format
Storage Capacity (Colour Images)	2GB SD Card: VGA: 32K, QVGA: 65K 8GB* SD Card: VGA: 210K, QVGA: 560K *(Due Q310)
Internal Battery Capacity	Lithium Ion, 3.7V - 7.5Ah
Power Consumption	Standby: 1.9 mA, Running: 100 mA, Charging: 200 mA
Dimensions	86 x 80 x 55 mm (3.4" x 3.1" x 2.2")
Weight	310g (11 oz)
Operating Temperature	-20°C to +60°C (-4° F to +140° F)
PC Software Requirements	Windows 2000 (SP4), Windows XP (SP2), Windows Vista